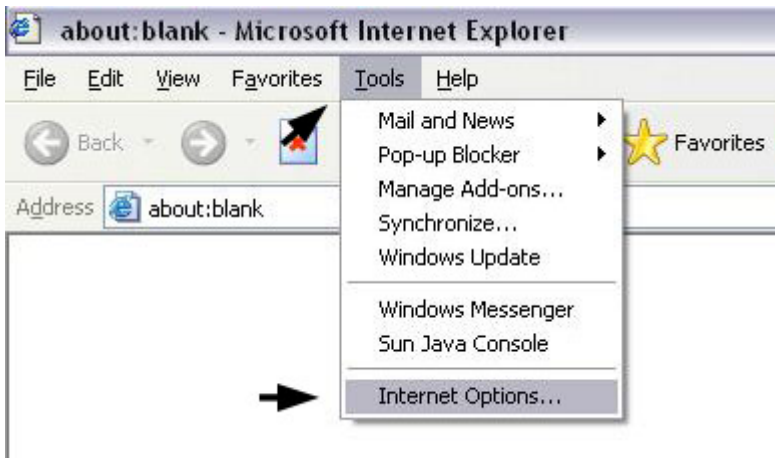




Right Click on Internet Explorer and select “Properties”

OR

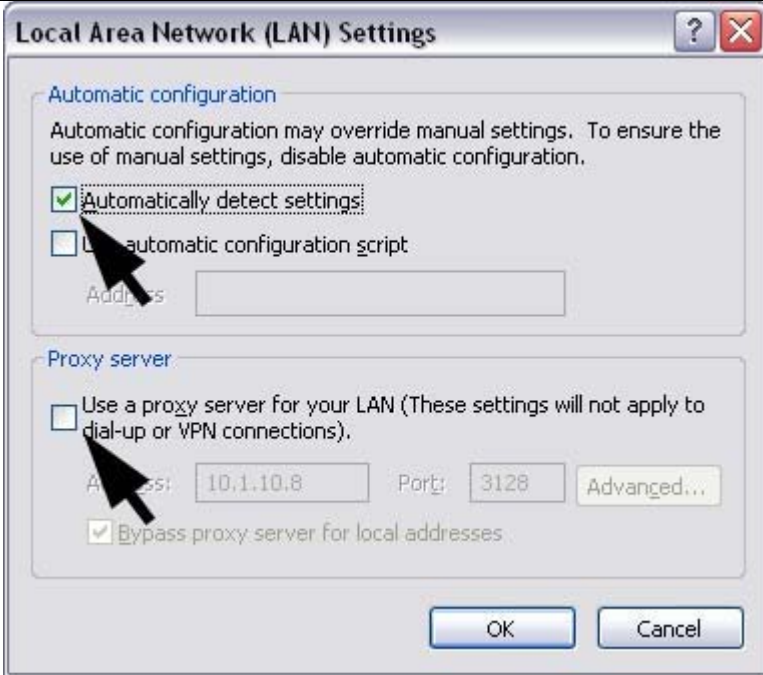


Open Internet Explorer. Click on “Tools” from the menu bar and select “Internet Options...”



If you have Dial-up settings make sure “Never dial a connection” is selected.

In the Internet Options box select the “Connections” tab and then click on the “LAN Settings...” button.



Make sure to check the “Automatically detect settings” box under “Automatic configuration”.

Uncheck the box for “Use a proxy server for your LAN...”

Once your done click the “OK” button until all the boxes are closed.

Close Internet Explorer (if it is open).

Re-open Internet Explorer and verify the internet is working, if not reboot the computer.